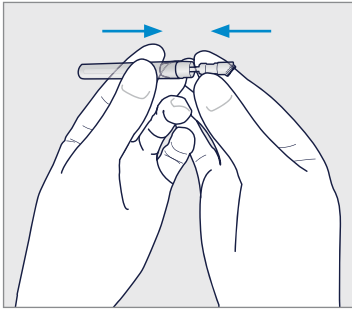
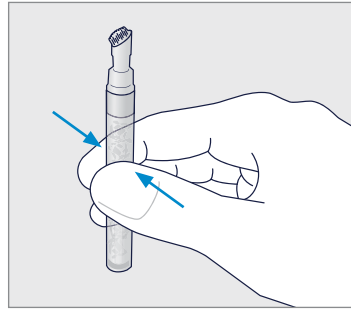


TECHNICAL GUIDE

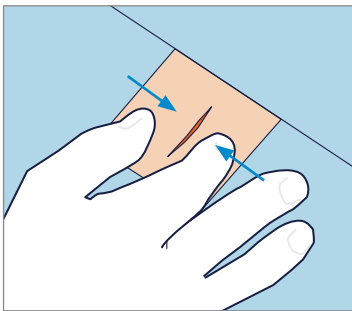
INDERMIL® flexifuze™*
topical tissue adhesive



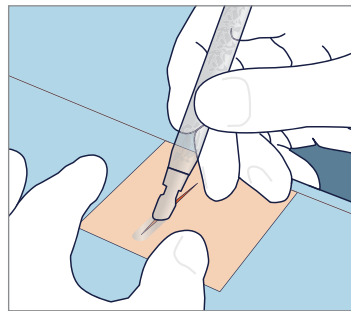
1. Attach Flow Control Applicator if desired.



2. Holding the device upright, squeeze the device between thumb and forefinger to break the glass ampoule.



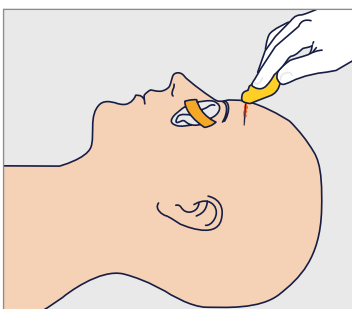
3. Approximate the wound edges together.



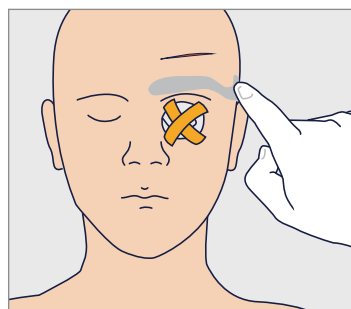
4. Gently squeeze the tube between thumb and forefinger to apply adhesive in a thin film over the length of the wound. Hold the wound closed for 60 seconds to complete the bond.

Volume of 0,75 ml provides wound coverage of over 20 cm.

For application near the eye, follow these extra steps before the application



1. Thoroughly cleanse the wound per standard surgical practice. Ensure that wound edges can be easily approximated. Eye should be closed and protected with gauze.



2. Prophylactic placement of petroleum jelly around the eye acts as a mechanical barrier or dam, that can be effective in preventing inadvertent flow of adhesive into the eye.

*Property of Connexicon Medical Ltd.

This technical guide is intended to help using the device. It does not replace the information contained in the package insert supplied with the device.

IMPORTANT: Please refer to the package insert for complete instructions, contraindications, warnings and precautions.

© 2020 Medtronic. All rights reserved. Medtronic, Medtronic logo and Further, Together are trademarks of Medtronic. All other brands are trademarks of a Medtronic company. 20-weu-flexifuze-ifu-brochure-4275336

INDERMIL®
flexifuze™*

Medtronic