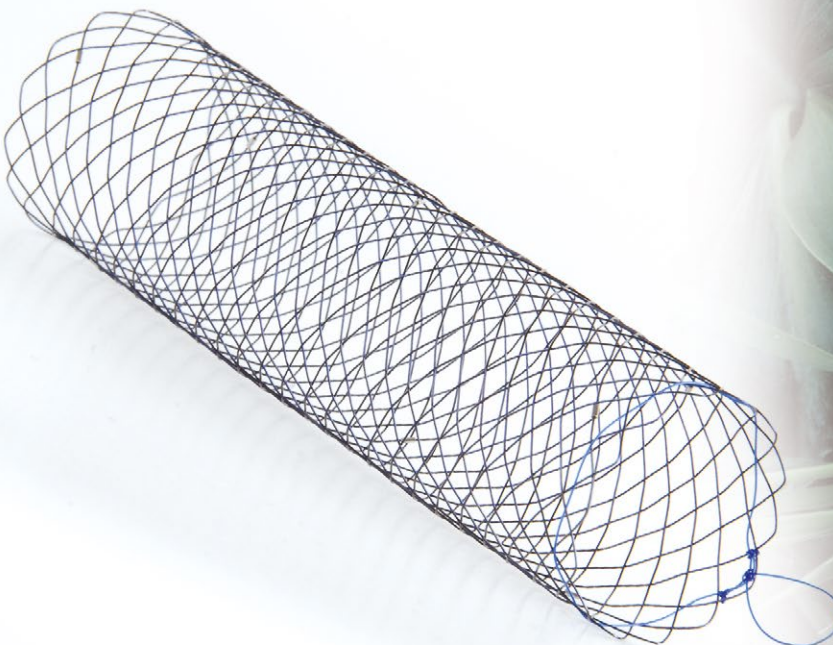
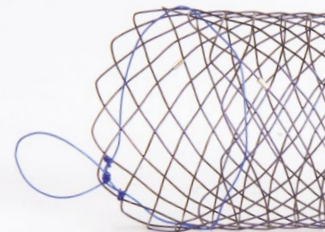


# Enterella

## SX-ELLA Stent Pyloroduodenal



# Enterella



Easy deployment

Excellent flexibility

Atraumatic stent ends

Smooth alignment around flexures



## Basic description

### SX-ELLA Stent Pyloroduodenal – Enterella

Stent system for fluoroscopic and / or endoscopic insertion  
Self-expandable nitinol stent preloaded in a pull-back delivery system

## Indications

Enterella Pyloroduodenal is indicated for palliative treatment of gastric outlet syndrome or duodenal strictures and/or obstructions caused by malignant tumors.

## Contraindications

Enteral ischemia  
Bowel perforation  
Peritoneal abscess  
Severe ascites  
Severe coagulopathy

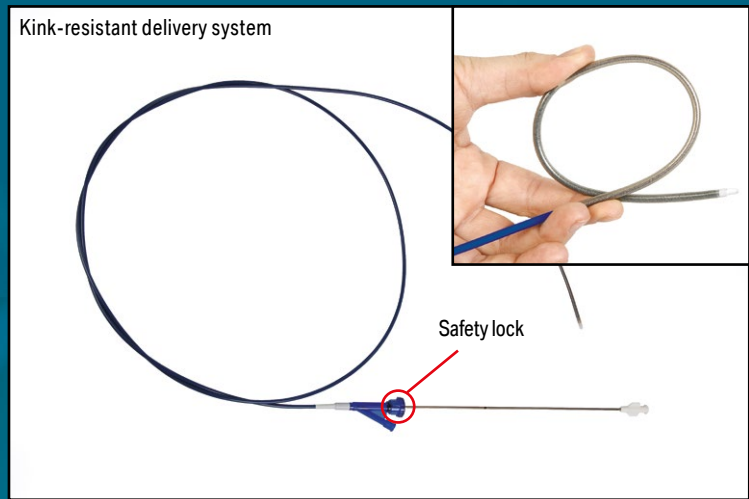
## Features / Benefits

- ✓ Atraumatic stent ends / Effective prevention of trauma to the gastric / duodenal wall
- ✓ Excellent flexibility / Precise conformation to the anatomical curves in a patient
- ✓ Radiopaque markers at both stent ends and at the midpoint / Improved visibility; accurate stent positioning
- ✓ Plastic repositioning loop at proximal stent end / Possibility of stent repositioning within five days following implantation
- ✓ Braided kink-resistant delivery system / Superior system introduction and stent deployment

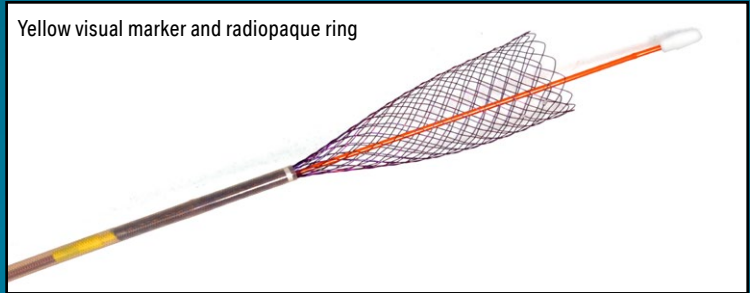
## Additional description

10.5 F (3.5 mm) delivery system available in a standard length of 210 cm allowing passage through the working channel of an endoscope  
Radiopaque, atraumatic olive tip of the delivery system  
Recommended guide wire: 0.035" (0.89 mm)

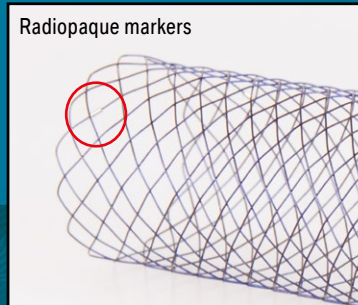
## Kink-resistant delivery system



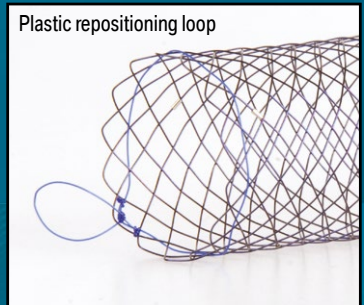
## Yellow visual marker and radiopaque ring



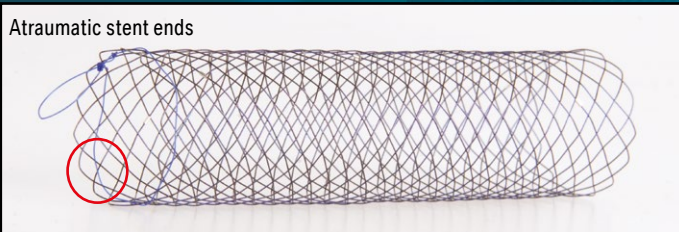
## Radiopaque markers



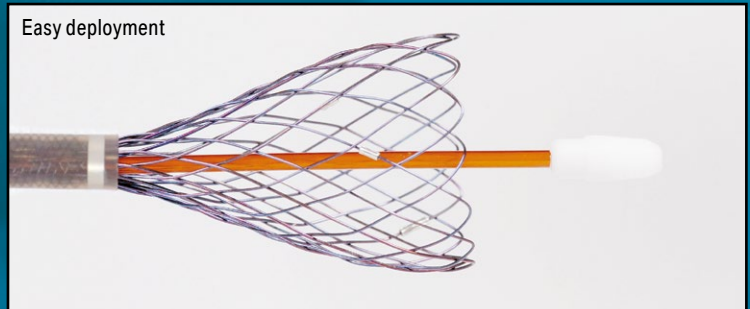
## Plastic repositioning loop



## Atraumatic stent ends



## Easy deployment



## Available sizes

REF No.	Nominal (unconstrained) diameter [mm]	Nominal (unconstrained) length [mm]
019-04-20-082	20	82
019-04-20-090	20	90
019-04-20-113	20	113
019-04-20-135	20	135
019-04-22-082	22	82
019-04-22-090	22	90
019-04-22-113	22	113
019-04-22-135	22	135
019-04-25-082	25	82
019-04-25-090	25	90
019-04-25-113	25	113
019-04-25-135	25	135

Distributor:

Manufacturer:

**ELLA-CS, s.r.o.**

Milady Horakove 504/45, Trebes,  
500 06 Hradec Kralove, Czech Republic

Tel.: +420 495 279 111 Fax: +420 495 265 655  
E-mail: info@ellacs.eu URL: www.ellacs.eu