

# Gastroenterology Product Catalog



# Table of Contents

## Reflux Monitoring

ZepHr® Impedance/pH Recorder & Accessories .....	3
ComforTEC® Probes .....	3–5

## GI Motility

High Resolution Esophageal Manometry .....	5–6
Zvu® Diagnostic Software .....	7

## Pelvic Floor Evaluation

Anorectal Manometry .....	7–9
---------------------------	-----

## Biliary Manometry

Biliary Manometry Accessories .....	9
-------------------------------------	---

## Esophageal Dilators

M-Flex® Blue Silicone Bougies .....	10
WeightRight® Tungsten-Filled Bougies .....	10
SafeGuide® Over the Guidewire Esophageal Dilators .....	11
InnerVision® Transillumination System (Lighted Bougie) .....	12

## CleanFreak® Endoscope Cleaning Products

Cleaning Brushes .....	12
Cleaning Sponges .....	13
Pre-Cleaning Kit .....	13
Transport Pad .....	13

## Endoscope Care & Accessories

CareGuard® Bite Block .....	14
BullDog® Biopsy Valves & Accessories .....	14
Capture™ Polyp Trap .....	15
Basic Endoscopy Kits .....	15



## Training

Please see the back of this catalog for Diversatek Healthcare's extensive training options. Contact our Clinical Support Team to learn more about our training for manometry and reflux testing or visit us online at **DiversatekHealthcare.com**.

# Reflux Monitoring

## ZepHr® Impedance/pH Recorder & Accessories



### ZepHr® Impedance/pH Recorder & Accessories

Part No.	Product	Description	Qty/Case
Z07-2000B-B	ZepHr® Z/pH Recorder	ZepHr® Z/pH ambulatory impedance/pH reflux monitoring recorder. Includes carrying case. ZepHr® has a limited two year warranty.	1
Z07-9000	ZepHr® System Kit	Includes a Compact Flash Reader, pH Calibration Tubes, and Buffer Solutions.	
Z07-4053	ZepHr® Battery Cover		1
Z07-4055	ZepHr® Probe Cover, Smoke		1
Z07R-8002	ZepHr® Thermoform Pouch		1
Z07-1250-4G	SD Flash Memory Card (4 GB)		1
A04-2000-S	ZepHr® AirFlo™ SPHINCTER Locator	LES locator for pH or Z/pH reflux testing. Infused catheters are required for use.	1
D82-3103	pH 1 Buffer Solution (500 mL)	For use with pH reflux testing system and catheters.	1
D82-3151	pH 4 Buffer Solution (500 mL)	For use with ComforTEC® Z/pH or pH reflux testing system and catheters.	1
D82-3152	pH 7 Buffer Solution (500 mL)	For use with ComforTEC® Z/pH or pH reflux testing system and catheters.	1
D82-3181	pH 1 Buffer Solution (250 mL)	For use with pH reflux testing system and catheters.	1
D82-3182	pH 4 Buffer Solution (250 mL)	For use with ComforTEC® Z/pH or pH reflux testing system and catheters.	1
D82-3183	pH 7 Buffer Solution (250 mL)	For use with ComforTEC® Z/pH or pH reflux testing system and catheters.	1
L89-5700-4	USB Multicard Reader Kit for ZepHr®		1
L89-6020-40	pH Calibration Tube (Set of 3)	Includes pH 4 and pH 7 buffer tubes plus a water tube.	1
L89-6021-40	pH Calibration Buffer Tube, 40 cm	Includes both pH 4 and pH 7 labels.	1
L89-8080	ZepHr® Calibration Stand		1
NG-0050	pH Adhesive Strip, Adult Size		50

## ComforTEC® Z/pH Probe

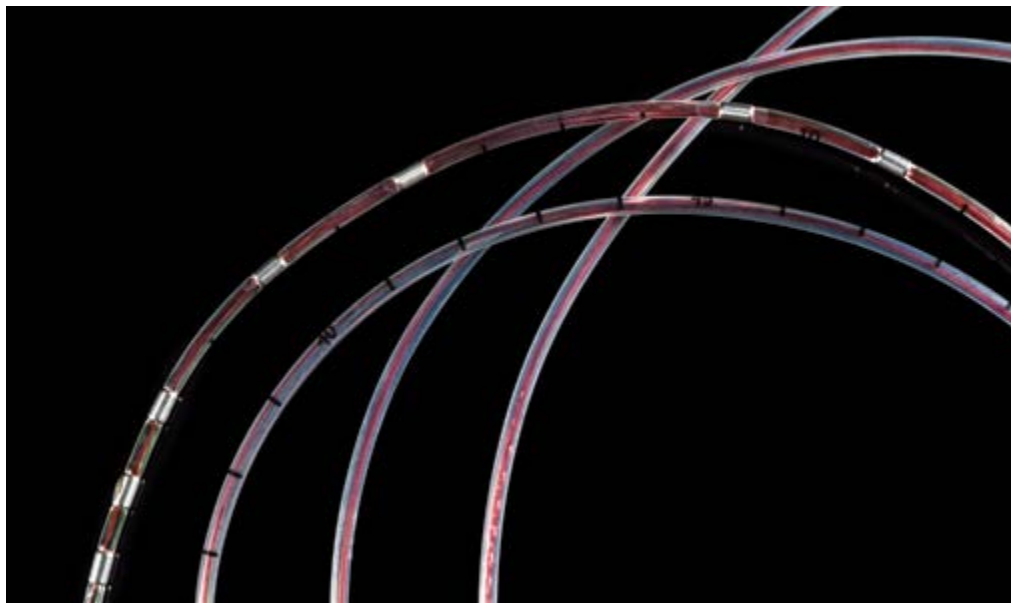
### Internal Reference, Non-infused.

Single-use, non-sterile

Part No.	Description	Qty/Case
ZAN-BD-31	≥ 18 cm Esophageal length, 6 impedance, 2 pH channels 0 & 15 cm, 6.4 FR / 2.13 mm.	1
ZAN-BG-44	≥ 18 cm Esophageal length, 6 impedance, 2 pH channels -15 & 0 cm, 6.9 FR / 2.3 mm.	1
ZAN-BS-01	≥ 18 cm Esophageal length, 6 impedance, 1 pH channel, 6.4 FR / 2.13 mm.	1
ZAN-BT-60	≥ 18 cm Esophageal length, 6 impedance, 3 pH channels -15 & 0 & 15 cm, 6.4 FR / 2.3 mm (Gastric).	1
ZPN-BS-46	15-18 cm Esophageal length, 6 impedance, 1 pH channel, 6.4 FR / 2.13 mm.	1
ZPN-BS-50	15-18 cm Esophageal length, 6 impedance, 1 pH channel, 6.9 FR / 2.3 mm. Sensor spacing at 1.5 cm.	1
ZPN-BG-57	15-18 cm Esophageal length, 6 impedance, 2 pH channels, -7 & 0 cm, 6.4 FR / 2.13 mm (Gastric).	1
ZIN-BS-51	< 15 cm Esophageal length, 6 impedance, 1 pH channel, 6.4 FR / 2.13 mm.	1

# Reflux Monitoring

## ComforTEC® Z/pH Probe



### Internal Reference, Infused.

Single-use, non-sterile. Use with ZepHr® AirFlo™ Spincter Locator

Part No.	Description	Qty/Case
ZAI-BD-31	≥ 18 cm Esophageal length, 6 impedance, 2 pH channels 0 & 15 cm, 6.9 FR / 2.3 mm.	1
ZAI-BS-01	≥ 18 cm Esophageal length, 6 impedance, 1 pH channel, 6.9 FR / 2.3 mm.	1
ZPI-BS-46	15–18 cm Esophageal length, 6 impedance, 1 pH channel, 6.9 FR / 2.3 mm.	1
ZAI-BG-44	≥ 18 cm Esophageal length, 6 impedance, 2 pH channels -15 & 0 cm, 6.4 FR / 2.13 mm (Gastric).	1
ZPI-BG-52	15–18 cm Esophageal length, 6 impedance, 2 pH channels -12 & 0 cm, 6.4 FR / 2.13 mm. Sensor spacing 1.5 cm (Gastric).	1

### LPR Probe, Internal Reference, Infused.

Single-use, non-sterile

Part No.	Description	Qty/Case
ZAI-BL-54	26–28 cm Esophageal length, 6.9 FR / 2.3 mm. To assess acid and nonacid reflux. (Total LPR)	1
ZAI-BL-55	23–25 cm Esophageal length, 6.9 FR / 2.3 mm. To assess acid and nonacid reflux. (Total LPR)	1
ZAI-BL-56	20–22 cm Esophageal length, 6.9 FR / 2.3 mm. To assess acid and nonacid reflux. (Total LPR)	1

### External Reference, Non-infused.

Single-use, non-sterile

Part No.	Description	Qty/Case
ZAN-BS-01E	≥ 18 cm Esophageal length, 6 impedance, 1 pH channel, 6.4 FR / 2.13 mm.	1
ZPN-BS-46E	15–18 cm Esophageal length, 6 impedance, 1 pH channel, 6.4 FR / 2.13 mm.	1
ZIN-BS-45E	< 15 cm Esophageal length, 6 impedance, 1 pH channel, 6.4 FR / 2.13 mm.	1
ZAN-BG-44E	≥ 18 cm Esophageal length, 6 impedance, 2 pH channels -15 & 0 cm, 6.9 FR / 2.3 mm. Special Order (Gastric).	1
ZPN-BG-07E	15–18 cm Esophageal length, 6 impedance, 2 pH channels -12 & 0 cm, 6.4 FR / 2.13 mm. Special Order (Gastric).	1

### External Reference, Infused.

Single-use, non-sterile

Part No.	Description	Qty/Case
ZAI-BS-01E	≥ 18 cm Esophageal length, 6 impedance, 1 pH channel, 6.4 FR / 2.13 mm.	1
ZAI-BG-44E	≥ 18 cm Esophageal length, 6 impedance, 2 pH channels -15 & 0 cm, 6.9 FR / 2.3 mm. Special Order (Gastric).	1



# Reflux Monitoring

## ComforTEC® pH Probe

### Internal Reference, Non-infused.

Single-use, non-sterile

Part No.	Description	Qty/Case
PHN10	Dual channel 10 cm spacing, 6.4 FR / 2.13 mm.	1
PHN10-P	Dual channel 10 cm spacing, 5 FR / 1.67 mm.	1
PHN15	Dual channel 15 cm spacing, 6.4 FR / 2.13 mm.	1
PHN21	Dual channel 21 cm spacing, 6.4 FR / 2.13 mm.	1
PHN5	Dual channel 5 cm spacing, 6.4 FR / 2.13 mm.	1
PHNS	Single channel, 6.4 FR / 2.13 mm.	1
PHNS-P	Single channel, 5 FR / 1.67 mm.	1

### Internal Reference, Infused.

Single-use, non-sterile

Part No.	Description	Qty/Case
PHI10	Dual channel 10 cm spacing, 6.4 FR / 2.13 mm.	1
PHI15	Dual channel 15 cm spacing, 6.4 FR / 2.13 mm.	1
PHI5	Dual channel 5 cm spacing, 6.4 FR / 2.13 mm.	1
PHIS	Single channel, 5 FR / 1.67 mm.	1

## GI Motility

### High Resolution Esophageal Manometry

#### InSIGHT Ultima® Systems for Esophageal Manometry

Part No.	Description
ULTCART-H	<ul style="list-style-type: none"><li>• System includes HRIM2 Impedance Manometry Catheter (12 FR. 32 circumferential pressure channels/ 16 impedance channels).</li><li>• Includes InSIGHT Ultima® Central Unit, 24" LCD medical grade monitor with stylus, computer/keyboard/mouse, printer, air and water calibration kits, cables and accessories.</li><li>• Includes Zvu® and BioVIEW® Software.</li><li>• Includes Motility Cart.</li><li>• Training sold separately.</li></ul>
ULTCART-HSD	<ul style="list-style-type: none"><li>• System includes HRIM SD Impedance Manometry Catheter (8 FR. 32 directional pressure channels/ 16 impedance channels).</li><li>• Includes InSIGHT Ultima® Central Unit, 24" LCD medical grade monitor with stylus, computer/keyboard/mouse, printer, air and water calibration kits, cables and accessories.</li><li>• Includes Zvu® and BioVIEW® Software.</li><li>• Includes Motility Cart.</li><li>• Training sold separately.</li></ul>
ULTCART-HP	<ul style="list-style-type: none"><li>• System includes HRM Esophageal Manometry Catheter (12 FR. 32 circumferential pressure channels).</li><li>• Includes InSIGHT Ultima® Central Unit, 24" LCD medical grade monitor with stylus, computer/keyboard/mouse, printer, air and water calibration kits, cables and accessories.</li><li>• Includes Zvu® and BioVIEW® Software.</li><li>• Includes Motility Cart.</li><li>• Training sold separately.</li></ul>
ULTSYS-H	<ul style="list-style-type: none"><li>• System includes HRIM2 Impedance Manometry Catheter (12 FR. 32 circumferential pressure channels/ 16 impedance channels).</li><li>• Includes InSIGHT Ultima® Central Unit, air and water calibration kits, cables and accessories, plus isolation transformer.</li><li>• Includes Zvu® and BioVIEW® Software.</li><li>• Motility Cart not included.</li><li>• Training sold separately.</li></ul>
ULTSYS-HSD	<ul style="list-style-type: none"><li>• System includes HRIM SD Impedance Manometry Catheter (8 FR. 32 directional pressure channels/ 16 impedance channels).</li><li>• Includes InSIGHT Ultima® Central Unit, air and water calibration kits, cables and accessories, plus isolation transformer.</li><li>• Includes Zvu® and BioVIEW® Software.</li><li>• Motility Cart not included.</li><li>• Training sold separately.</li></ul>
ULTSYS-HP	<ul style="list-style-type: none"><li>• System includes HRM Esophageal Manometry Catheter (12 FR. 32 circumferential pressure channels).</li><li>• Includes InSIGHT Ultima® Central Unit, air and water calibration kits, cables and accessories, plus isolation transformer.</li><li>• Includes Zvu® and BioVIEW® Software.</li><li>• Motility Cart not included.</li><li>• Training sold separately.</li></ul>



## High Resolution Esophageal Manometry

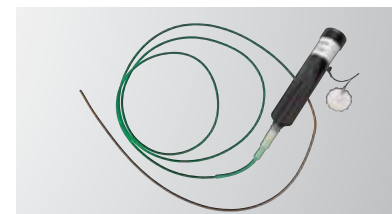
### Esophageal Manometry Probes

Part No.	Description	Qty/Case
UNI-ESO-WG1A1	HRIM2 High Resolution Impedance Manometry Catheter. 32 circumferential pressure / 16 impedance channels. 12 FR.	1
UNI-ESO-WG1A2	HRIM SD High Resolution Impedance Manometry Catheter. 32 directional pressure / 16 impedance channels. 8 FR.	1
UNI-ESO-W04G2	HRM High Resolution Manometry Catheter. 32 circumferential pressure channels. 12 FR.	1



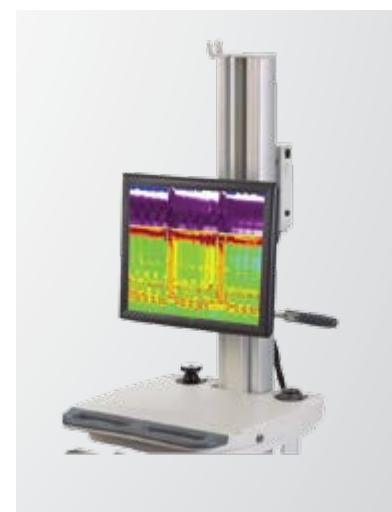
### Esophageal Manometry Accessories

Part No.	Description	Qty/Case
CART5R	InSIGHT Ultima® System Cart. Features adjustable height setting, locking drawer and isolation transformer.	1
CART5R-6100	Legacy Adapter Mounting Kit for Ultima cart systems.	1
EFTV-12V	Viscous Solution Variety Pack, 80 mL containers. Used with esophageal catheters utilizing impedance technology.	12
H12R-4500	Legacy Adapter. Interface plug-in between (RJ45, 51 PIN, 20PIN) for InSIGHT Ultima®.	1
H12R-5100	Air Calibration Tube Kit, 18" for InSIGHT Ultima®.	1
H12R-5200	Water Calibration Tube for InSIGHT Ultima®.	1
H12R-5400	Auto Calibration Air Lines Kit for Zvu® Software and InSIGHT Ultima®.	1
H12R-7110	Ultima Cable for Unisensor Probe.	1
H12R-7210	Ultima Cable for Unisensor Probe (Lemo Connector).	1
S90-5120-H	Calibration Tube Universal Washer and O-Ring Replacement Kit.	1
S90-5135	Water Tube for InSIGHT G3.	1
S90-5300-18C	Air Calibration Tube Kit, 18" for InSIGHT G3.	1
S97-1010	Respiration Monitoring Belt.	1



### Computer Accessories

Part No.	Description	Qty/Case
COMP-15	Desktop PC with Windows® 10 Professional including a wireless keyboard and mouse.	1
L89-5500	Desktop Color Printer.	1
LCDR-1194	Monitor, Touchscreen LCD, 24" for InSIGHT Ultima®.	1
S98-8181	Stylus for Touch Screen Monitor.	1

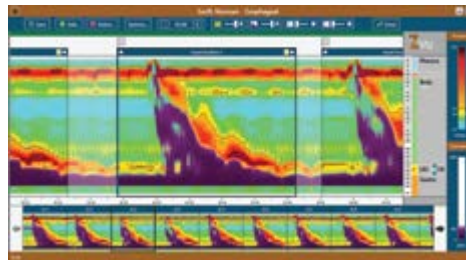


# GI Motility

## Zvu® Diagnostic Software

### GI Motility Software

Part No.	Description	Qty/Case
ZVU-2016	Zvu® Software for Esophageal Manometry & Reflux Studies. Minimum Requirements for Host Computer: PC Processor: Intel 64-bit processor, 2 GHz or faster. Graphics: DirectX 11 device with Feature (DDI) level 11 or higher (includes Intel HD2500). Memory: 4 GB. Hard Drive: 200 GB. Operating System: Windows® 7 Professional SP1, 64 bit, with updates. Monitor: Full HD 1080p (1920x1080 resolution). USB Ports: 1 available USB 2.0 port.	1
S98-1925-P1	BioVIEW® Suite Software for Anorectal Studies.	1
S98-1960-1C-CD	HIS Interface for BioVIEW® Software.	1
S96-1118	Data Extraction Utility Software Kit (compatible only with BioVIEW® software).	1



### Clinical Innovations Esophageal Probes & Accessories

Part No.	Description	Qty/Case
GIM-6000E	Air Charged Esophageal Motility Catheter, 4 Channel Circumferential (Single-use).	5
GIM-6100	Air Charged Calibration Kit.	1
GIM-6110	Air Charged Calibrator Stopper.	1
GIS-7010	Air Charged Adapter Cable for a 51 Pin Connector (for InSIGHT G3 Systems).	1

### Mui Scientific Water Perfusion Catheters

Part No.	Description	Qty/Case
SUEMC-M4A-10	Mui Esophageal Manometric Catheter (12 FR, 4 channel) (Single-use).	10

## Pelvic Floor Evaluation

### Anorectal Manometry

#### InSIGHT Ultima® Systems for Anorectal Manometry

Part No.	Description
ULTCART-HA	<ul style="list-style-type: none"> <li>• System includes HRaM Anorectal Manometry Catheter (12 FR. 22 directional pressure channels and 1 directional balloon channel).</li> <li>• Includes InSIGHT Ultima® Central Unit, 24" LCD medical grade monitor with stylus, computer/keyboard/mouse, printer, air and water calibration kits, cables and accessories.</li> <li>• Includes Zvu® and BioVIEW® Software.</li> <li>• Includes Motility Cart.</li> <li>• Training sold separately.</li> </ul>
ULTCART-HCA	<ul style="list-style-type: none"> <li>• System includes HRCA Anorectal Manometry Catheter (12 FR. 6 circumferential pressure channels and 1 directional balloon channel).</li> <li>• Includes InSIGHT Ultima® Central Unit, 24" LCD medical grade monitor with stylus, computer/keyboard/mouse, printer, air and water calibration kits, cables and accessories.</li> <li>• Includes Zvu® and BioVIEW® Software.</li> <li>• Includes Motility Cart.</li> <li>• Training sold separately.</li> </ul>
ULTSYS-HA	<ul style="list-style-type: none"> <li>• System includes HRaM Anorectal Manometry Catheter (12 FR. 22 directional pressure channels and 1 directional balloon channel).</li> <li>• Includes InSIGHT Ultima® Central Unit, air and water calibration kits, cables and accessories, plus isolation transformer.</li> <li>• Includes Zvu® and BioVIEW® Software.</li> <li>• Motility Cart not included.</li> <li>• Training sold separately.</li> </ul>
ULTSYS-HCA	<ul style="list-style-type: none"> <li>• System includes HRCA Anorectal Manometry Catheter (12 FR. 6 circumferential pressure channels and 1 directional balloon channel).</li> <li>• Includes InSIGHT Ultima® Central Unit, air and water calibration kits, cables and accessories, plus isolation transformer.</li> <li>• Includes Zvu® and BioVIEW® Software.</li> <li>• Motility Cart not included.</li> <li>• Training sold separately.</li> </ul>



# Pelvic Floor Evaluation

## Anorectal Manometry

### InSIGHT Ultima® Anorectal Manometry Modules

Part No.	Description
S98-1200-U01	HRaM Anorectal Manometry Module. Includes Unisensor HRaM catheter, acquisition software. Denver Anorectal Course tuition for up to 3 people. Calibration kit not included.
S98-1200-U07	HRCA Anorectal Manometry Module. Includes Unisensor HRCA catheter and acquisition software. Denver anorectal course tuition for up to 3 people. Calibration kit and cable not included.
S98-1400-U01	Biofeedback Ultima Module. Requires purchase of an anorectal module. Includes Ultima EMG cable, perianal sensor and sensor cable, and acquisition software.
S98-1200-4A-CIU	Air Charged Anorectal Module for InSIGHT Ultima. Includes 4 channel disposable anorectal starter kit, Stimsense, acquisition software and accessories for Ultima including a Legacy Adapter.

### Anorectal Manometry Probes

Part No.	Description	Qty/Case
UNI-ANO-704G1	HRCA Anorectal Manometry Catheter. 6 circumferential pressure channels and 1 directional balloon channel. 12 FR. For InSIGHT Ultima® only.	1
UNI-ANO-M0138	HRaM Anorectal Manometry Catheter. 22 directional pressure channels and 1 directional balloon channel. 12 FR.	1



### Anorectal Manometry Accessories

Part No.	Description	Qty/Case
A86-1070	Anorectal Balloon, Adult, Contains Latex. For anorectal compliance testing.	5
A86-4100	Polyurethane Bands (Disk of 20 Bands) for HRaM catheters.	1
A86-4200	Ligator for HRaM catheters.	1
A86-4300-10	Anorectal Balloon, 400CC TPE, Latex-Free, for HRaM catheters.	10
A86-4500	Disposable Suture Removal Kit for HRaM catheters.	1
A86-5070	Anorectal Balloon, Pediatric, Contains Latex.	5
A97-1000	StimSense Pressure Sensor. Measures rectal balloon pressure during anorectal compliance testing.	1
CART5R	InSIGHT Ultima® System Cart. Features adjustable height setting, locking drawer and isolation transformer.	1
CART5R-6100	Legacy Adapter Mounting Kit for Ultima cart systems.	1
H12R-4500	Legacy Adapter. Interface plug-in between (RJ45, 51 PIN, 20PIN) for InSIGHT Ultima®.	1
H12R-5400	Auto Calibration Air Lines Kit for Zvu® Software.	1
H12R-7110	Ultima Cable for Unisensor Probe.	1
H12R-7210	Ultima Cable for Unisensor Probe (Lemo Connector).	1
SRS-4510	Perianal Rectal Sensor (Single-use).	1

### Computer Accessories

Part No.	Description	Qty/Case
COMP-15	Desktop PC with Windows® 10 Professional including a wireless keyboard and mouse.	1
L89-5500	Desktop Color Printer.	1
LCDR-1194	Monitor, Touchscreen LCD, 24" for InSIGHT Ultima®.	1
S98-8181	Stylus for Touch Screen Monitor.	1

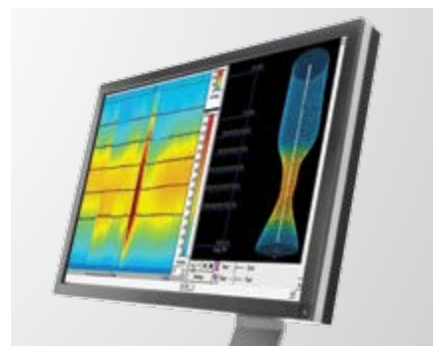


# Pelvic Floor Evaluation

## Anorectal Manometry

### GI Motility Software

Part No.	Description	Qty/Case
S98-1925-P1	BioVIEW® Suite Software for Anorectal Studies.	1
S98-1960-1C-CD	HIS Interface for BioVIEW® Software.	1
S96-1118	Data Extraction Utility Software Kit (compatible only with BioVIEW® software).	1

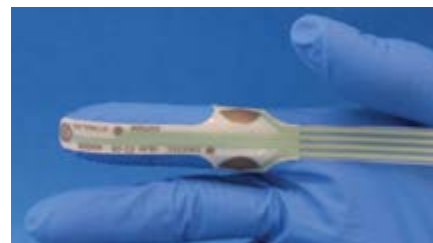


### Clinical Innovations Anorectal Probes & Accessories

Part No.	Description	Qty/Case
GIM-6000A	Air Charged Anorectal Manometry Catheter, 4 Channel Radial (Single-use).	5
GIM-6000D	Air Charged Anorectal Manometry Catheter, 4 Channel Directional (Single-use).	5
GIM-6100	Air Charged Calibration Kit.	1
GIM-6110	Air Charged Calibrator Stopper.	1
GIS-7010	Air Charged Adapter Cable for a 51 Pin Connector (for InSIGHT G3 Systems).	1

### Pudendal Nerve Latency Testing & Accessories

Part No.	Description	Qty/Case
CAD-2500	Cadwell Summit PNLT System (2 channel), with starter kit with accessories. Includes Laptop.	1
H12R-4300	EMG Adapter Assembly. Connects to the InSIGHT Ultima®.	1
H12R-7300	Cable, Snap leads (1 channel). Connects from the EMG Adapter to skin patches on the patient.	1
H12R-7400	Cable, Perianal Adapter (2 channel). Connects the perianal adapter to the EMG Adapter Assembly.	1



### Mui Scientific Water Perfusion Catheters

Part No.	Description	Qty/Case
SUAMC-M4A-10	Mui Anorectal Manometric Catheter (14 FR, 4 channel) (Single-use).	10
SUAMC-M5A-10	Mui Anorectal Manometric Catheter, radial configuration (14 FR, 4 channel) (Single-use).	10
SUAMC-M83A-10	Mui Anorectal Manometric Catheter (14 FR, 8 channel) (Single-use).	10
SUAMC-M8AA-10	Mui Anorectal Manometric Catheter, radial configuration (14 FR, 8 channel) (Single-use).	10
MUI-ANO-80036	Mui Anorectal Manometric Catheter, radial configuration (14 FR, 8 channel) (Reusable).	10

## Biliary Manometry

### Biliary Manometry Accessories

#### Biliary Manometry Accessories

Part No.	Description	Qty/Case
RR-18-480	Guide Wire for SOM-18-L-Lehman Biliary Catheter (Single-Use).	1
SOM-18-L-LEHMAN	Cook Medical Triple Lumen Biliary Manometry Catheter (Single-Use).	1

# Esophageal Dilators

## M-Flex® Blue Silicone Bougies



### M-Flex® Bougie Sets

Part No.	Description	Contents
1206-00	Maloney (tapered) Full Set.	21-piece set, 20–60 FR
1206-10	Maloney (tapered) Mini Set.	10-piece set, 36–54 FR
1207-00	Hurst (blunt) Full Set.	21-piece set, 20–60 FR
1207-10	Hurst (blunt) Mini Set.	10-piece set, 36–54 FR
1210-01	Bougie Storage Case.	

### M-Flex® Maloney (tapered) Bougies

Part No.	FR (French) Size	(mm)
1206-20	20	6.6
1206-22	22	7.4
1206-24	24	8
1206-26	26	8.6
1206-28	28	9.3
1206-30	30	10
1206-32	32	10.7
1206-34	34	11.2
1206-36	36	12
1206-38	38	12.5
1206-40	40	13
1206-42	42	14
1206-44	44	14.5
1206-46	46	15.2
1206-48	48	16
1206-50	50	16.5
1206-52	52	17.2
1206-54	54	18
1206-56	56	18.5
1206-58	58	19.2
1206-60	60	20

### M-Flex® Hurst (blunt) Bougies

Part No.	FR (French) Size	(mm)
1207-20	20	6.6
1207-22	22	7.4
1207-24	24	8
1207-26	26	8.6
1207-28	28	9.3
1207-30	30	10
1207-32	32	10.7
1207-34	34	11.2
1207-36	36	12
1207-38	38	12.5
1207-40	40	13
1207-42	42	14
1207-44	44	14.5
1207-46	46	15.2
1207-48	48	16
1207-50	50	16.5
1207-52	52	17.2
1207-54	54	18
1207-56	56	18.5
1207-58	58	19.2
1207-60	60	20

## WeightRight® Tungsten-Filled Bougies



### WeightRight® Bougie Sets

Part No.	Description	Contents
1208-00	Maloney (tapered) Full Set.	23-piece set, 16–60 FR
1208-10	Maloney (tapered) Mini Set.	10-piece set, 36–54 FR
1209-00	Hurst (blunt) Full Set.	23-piece set, 16–60 FR
1209-10	Hurst (blunt) Mini Set.	10-piece set, 36–54 FR
1210-01	Bougie Storage Case.	

### WeightRight® Maloney (tapered) Bougies

Part No.	FR (French) Size	(mm)
1208-16	16	5.3
1208-18	18	6
1208-20	20	6.6
1208-22	22	7.4
1208-24	24	8
1208-26	26	8.6
1208-28	28	9.3
1208-30	30	10
1208-32	32	10.7
1208-34	34	11.2
1208-36	36	12
1208-38	38	12.5
1208-40	40	13
1208-42	42	14
1208-44	44	14.5
1208-46	46	15.2
1208-48	48	16
1208-50	50	16.5
1208-52	52	17.2
1208-54	54	18
1208-56	56	18.5
1208-58	58	19.2
1208-60	60	20

### WeightRight® Hurst (blunt) Bougies

Part No.	FR (French) Size	(mm)
1209-16	16	5.3
1209-18	18	6
1209-20	20	6.6
1209-22	22	7.4
1209-24	24	8
1209-26	26	8.6
1209-28	28	9.3
1209-30	30	10
1209-32	32	10.7
1209-34	34	11.2
1209-36	36	12
1209-38	38	12.5
1209-40	40	13
1209-42	42	14
1209-44	44	14.5
1209-46	46	15.2
1209-48	48	16
1209-50	50	16.5
1209-52	52	17.2
1209-54	54	18
1209-56	56	18.5
1209-58	58	19.2
1209-60	60	20

# Esophageal Dilators

## SafeGuide® Over the Guidewire Esophageal Dilators

SafeGuide® Dilator



### SafeGuide® Dilatation Systems

Part No.	Description	Contents
1214-00	Full Set	<ul style="list-style-type: none"><li>• 16 dilators, 15–60 FR.</li><li>• 1 storage case.</li><li>• 1 marked spring tip guidewire.</li><li>• 1 reusable cleaning brush.</li><li>• 25 disposable cleaning adapters.</li></ul>
1214-10	Mini Set	<ul style="list-style-type: none"><li>• 7 dilators (15, 21, 27, 33, 39, 42, 45 FR).</li><li>• 1 storage case.</li><li>• 1 marked spring tip guidewire.</li><li>• 1 reusable cleaning brush.</li><li>• 25 disposable cleaning adapters.</li></ul>
Custom Mini Set	Contact Your Sales Representative	<ul style="list-style-type: none"><li>• 7 dilators of your choice.</li><li>• 1 storage case.</li><li>• 1 marked spring tip guidewire.</li><li>• 1 reusable cleaning brush.</li><li>• 25 disposable cleaning adapters.</li></ul>

### SafeGuide® Dilators

Part No.	FR (French) Size	(mm)
1214-15	15	5
1214-18	18	6
1214-21	21	7
1214-24	24	8
1214-27	27	9
1214-30	30	10
1214-33	33	11
1214-36	36	12
1214-39	39	13
1214-42	42	14
1214-45	45	15
1214-48	48	16
1214-51	51	17
1214-54	54	18
1214-57	57	19
1214-60	60	20

## SafeGuide® Accessories

### SafeGuide® Accessories

Part No.	Description	Qty/Case
1214-01	SafeGuide Storage Case.	1
1214-02	SafeGuide Marked Spring Tip Guidewires.	2
1214-03D	SafeGuide Disposable Cleaning Brush.	3
1214-03R	SafeGuide Reusable Cleaning Brush.	3
1214-04	SafeGuide Disposable Cleaning Adapters.	25



# Esophageal Dilators

## InnerVision® Transillumination System (Lighted Bougie)

### InnerVision® Fiber Optic Cable

Single-use

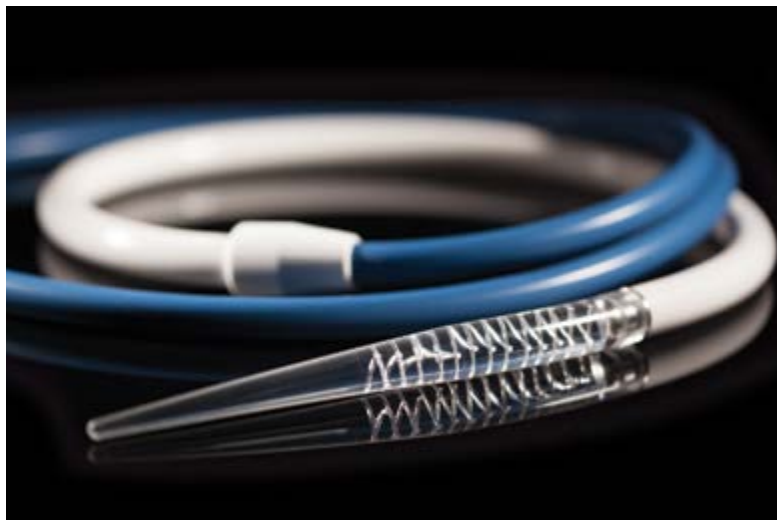
Part No.	Sterility	Size	Compatible Connector	Qty/Case
1450-40	Non-Sterile	40 Fr	Circon-ACMI/Olympus	1
1450-50	Non-Sterile	50 Fr	Circon-ACMI/Olympus	1
1450-56	Non-Sterile	56 Fr	Circon-ACMI/Olympus	1
1455-40	Non-Sterile	40 Fr	Storz	1
1455-50	Non-Sterile	50 Fr	Storz	1
1455-56	Non-Sterile	56 Fr	Storz	1

### InnerVision® Fiber Optic Tip

Single Use

Part No.	Sterility	Size	Qty/Case
1465-40	Sterile	40 Fr, Blunt	5
1465-50	Sterile	50 Fr, Tapered	5
1465-56	Sterile	56 Fr, Tapered	5

Detachable InnerVision® silicone tips are available in 40 FR, 50 FR and 56 FR sizes and must be used with corresponding InnerVision® cables.



### Wolf/Dyonics Adapter for Circon-ACMI/Olympus Light Source

Reusable

Part No.	Sterility	Qty/Case
1450-02	Non-Sterile	1

Wolf/Dyonics Adapter, Storz Connector and Circon-ACMI/Olympus Connector.

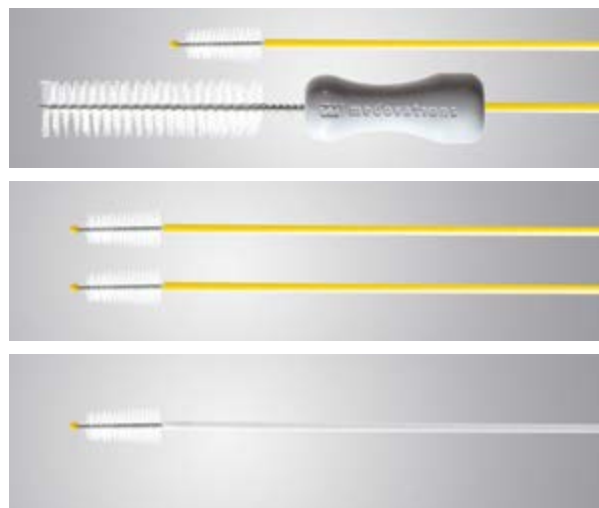
## CleanFreak® Endoscope Cleaning Products

### Cleaning Brushes

#### CleanFreak® Endoscope Cleaning Brushes

Single-use, non-sterile

Part No.	Description	Bristle Diameter (mm)	Sheath Diameter (mm)	Channel Diameter Range (mm)	Length (in/cm)	Qty/Case
1200-01	Standard Brush.	5–7	1.7	2.0–6.0	90.5/230	50
1200-02	Extra Wide Brush.	7–9	1.7	2.8–6.0	90.5/230	50
1200-03	Extra Long Brush.	5–7	1.7	2.0–6.0	90.5/230	50
1200-04	Dual Ended Brush.	5–7	1.7	2.0–6.0	90.5/230	50
1200-05	Combination Brush (Valve & Channel Brush).	5–7	1.7	2.0–6.0	90.5/230	50
1200-06	Valve Brush.	10				50
1200-07	Heavy Duty Standard Brush.	5–7	1.7	2.0–6.0	90.5/230	50
1200-08	Heavy Duty Dual Ended Brush.	5–7	1.7	2.0–6.0	90.5/230	50
1200-09	Heavy Duty Combination Brush (Valve & Channel Brush).	5–7	1.7	2.0–6.0	90.5/230	50



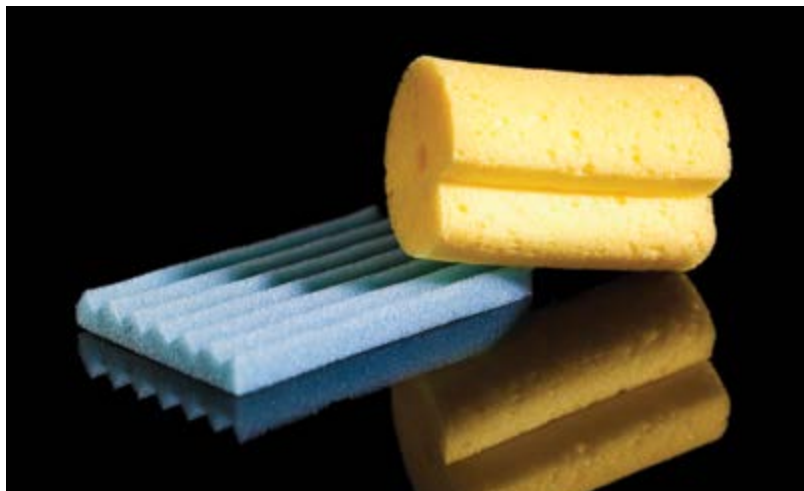
# CleanFreak® Endoscope Cleaning Products

## Sponges

### CleanFreak® Endoscope Cleaning Sponges

Single-use, non-sterile

Part No.	Description	Color	Qty/Case
1201-01	Endoscope Sponge—Textured.	Blue	200
1201-02	Endoscope Sponge—Cylindrical.	Yellow	50
1201-03	Dry Imbibed Endoscope Sponge—Cylindrical.	Yellow	50

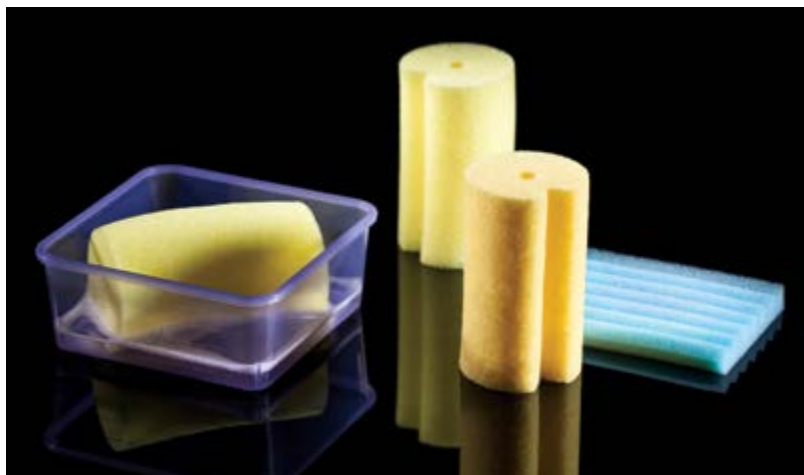


## Pre-Cleaning Kit

### CleanFreak® Pre-Cleaning Kit

Single-use, non-sterile

Part No.	Description	Qty/Case
1201-20	Dry Imbibed Sponge with Water Basin.	24



## Transport Pad

### CleanFreak® Transport Pad

Single-use, non-sterile

Part No.	Description	Size	Qty/Case
1201-90	Transport Pad.	40" x 29"	25





# Endoscope Care & Accessories

## Bite Block

### CareGuard® Bite Block

Single-use, non-sterile

Part No.	Size	Color	Description	Strap Option	Qty/Case
1196-48	48 FR	Green	With dental rim.	With Blue Strap	100
1196-60	60 FR	Pink	With dental rim and lateral ports.	With Blue Strap	100
1196-60XL	60 FR XL	Purple	With dental rim and lateral ports.	With Blue Strap	100
1197-48	48 FR	Green	With dental rim.	No Strap	100
1197-60	60 FR	Pink	With dental rim and lateral ports.	No Strap	100
1197-60XL	60 FR XL	Purple	With dental rim and lateral ports.	No Strap	100
1198-48	48 FR	Green	With dental rim.	With Soft Strap	100
1198-60	60 FR	Pink	With dental rim and lateral ports.	With Soft Strap	100
1198-60XL	60 FR XL	Purple	With dental rim and lateral ports.	With Soft Strap	100



## Biopsy Valve

### BullDog® Biopsy Valves & Accessories

Single-use

Part No.	Description	Sterility	Color	Qty/Case
1203-00	Olympus/Fujinon Compatible.	Non-Sterile	Blue	100
1203-05	Olympus/Fujinon Compatible, Bulk.	Non-Sterile	Blue	200
1203-10	Olympus/Fujinon Compatible.	Sterile	Blue	100
1203-20	Pentax Compatible.	Non-Sterile	Green	100
1203-50	Irrigating Adapter.	Non-Sterile	Purple	50



# Endoscope Care & Accessories

## Polyp Trap

**Capture™ Polyp Trap**  
Single-use, non-sterile

Part No.	Description	Qty/Case
1202-01	4 Chamber.	25



## Endoscopy Kits

### Basic Endoscopy Kits

Diversatek Healthcare will customize a kit to your exact specifications. Please contact your Product Specialist to learn more about our existing Endoscopy Kit options or work with us to design your own kit that meets your needs.

Choose from our most popular items or feel free to inquire about others not listed here:

- Transport Pad.
- Water Basin.
- Dry Imbibed Sponge.
- EZ Lubricating Jelly (1.1 oz or 2 oz).
- Gauze Pads.
- Suction Tubing.
- Cleaning Brushes.
- Bite Blocks.
- Biopsy Valves.
- Biohazard Labels.



# Innovations in Clinical Education

## Diversatek University Online

Our online training platform contains free content on esophageal and anorectal manometric studies, as well as impedance/pH reflux monitoring studies. Included are tutorials providing step-by-step guidance to develop skills in data acquisition, study review and report generation. Simply go to **DiversatekHealthcare.com** to request log-in information.

## Denver Training Center

Our Technical Research & Training Center specializes in clinical education and personalized training to make learning easy and convenient. Our comprehensive clinical instruction provides users with the knowledge and skills necessary to effectively acquire and analyze high resolution impedance manometry studies, impedance/pH reflux monitoring studies and anorectal manometry studies. Email us at **clinicaleducation@diversatekhc.com** or visit us online to learn more about our Denver course offerings.

## Webinars

Diversatek Healthcare is proud to present a series of live, interactive discussions on topics related to esophageal function testing, impedance/pH reflux monitoring studies and anorectal manometry. Each webinar includes a didactic session followed by an open discussion. All webinars are recorded and posted to the Diversatek U online portal for easy reference. Access **DiversatekHealthcare.com** for upcoming webinar announcements.

## The Diversatek Healthcare Review

Diversatek Healthcare Review, our monthly e-newsletter, features what's new at Diversatek University along with up-to-date product information. Every issue also includes our Clinical Insights, providing educational tips for Z/pH and HRiM analysis as well as answers to the most frequently asked questions.

# Personalized Clinical Support

## Onsite Training

Diversatek Healthcare Clinical Specialists deliver product support to suit your specific needs—on your schedule. Specialists are onsite at your facility to train and support you on your Diversatek Healthcare manometry or reflux monitoring equipment as you work through patient cases, acquire and analyze patient data, and create patient reports.

## Virtual Coaching

Online and in real-time, Diversatek Healthcare Clinical Specialists work with you via screen sharing to provide study-specific data review and report generation coaching for your more difficult studies. Email us at **clinicalsupport@diversatekhc.com** to schedule a one-on-one session.



# Diversatek<sup>™</sup> Healthcare

Advancing GI care by driving science, developing and delivering solutions, and providing unmatched clinical support.

## DiversatekHealthcare.com

P 800.558.6408 or 414.265.7620

### Corporate Headquarters

102 East Keefe Avenue  
Milwaukee, WI 53212 USA

orders@diversatekhc.com  
sales@diversatekhc.com

### Technical Research & Training Center

9150 Commerce Center Circle, Suite 500  
Highlands Ranch, CO 80129 USA

technicalsupport@diversatekhc.com  
clinicalsupport@diversatekhc.com  
clinicaleducation@diversatekhc.com

Learn more from  
your personal product  
representative at  
**800-558-6408**